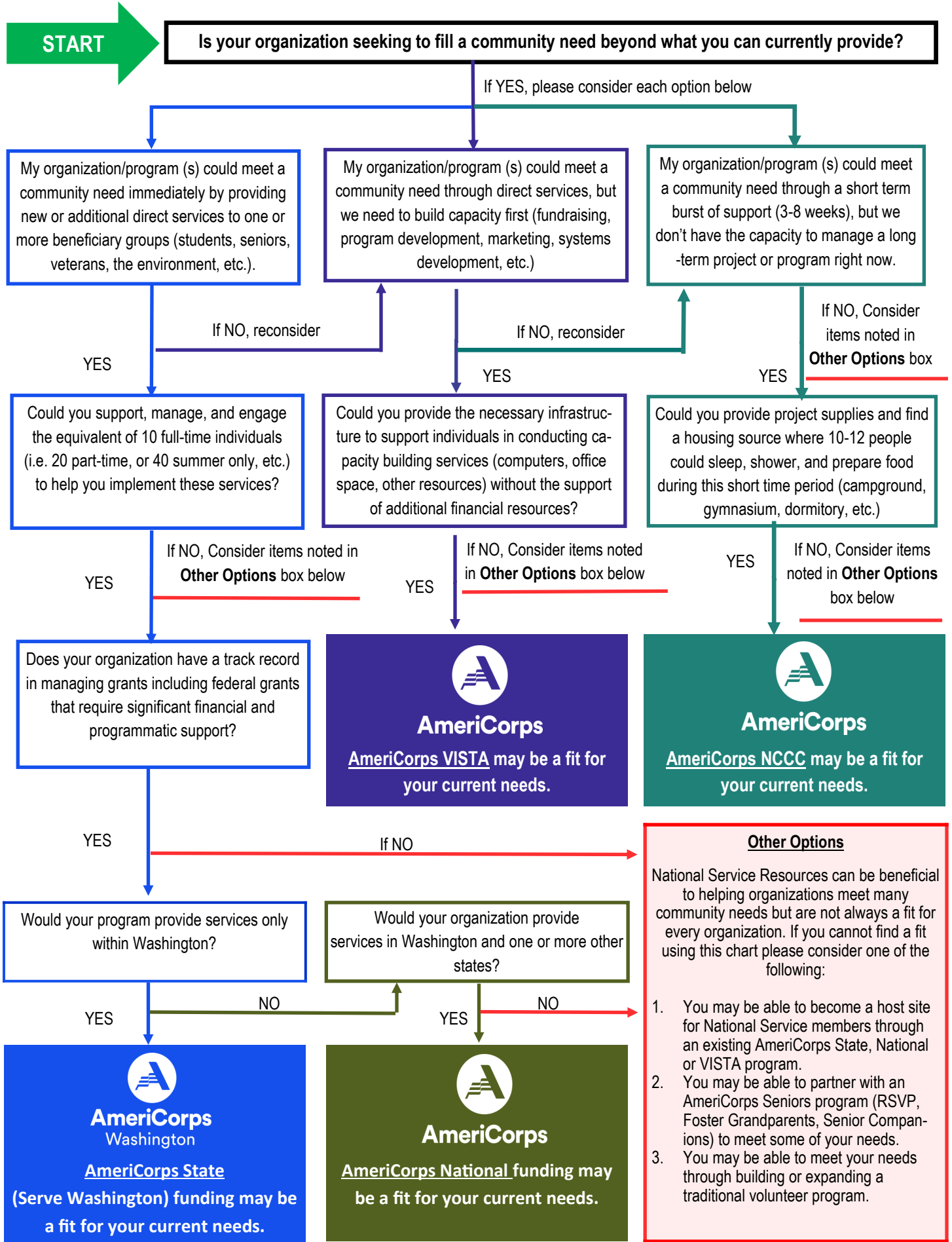
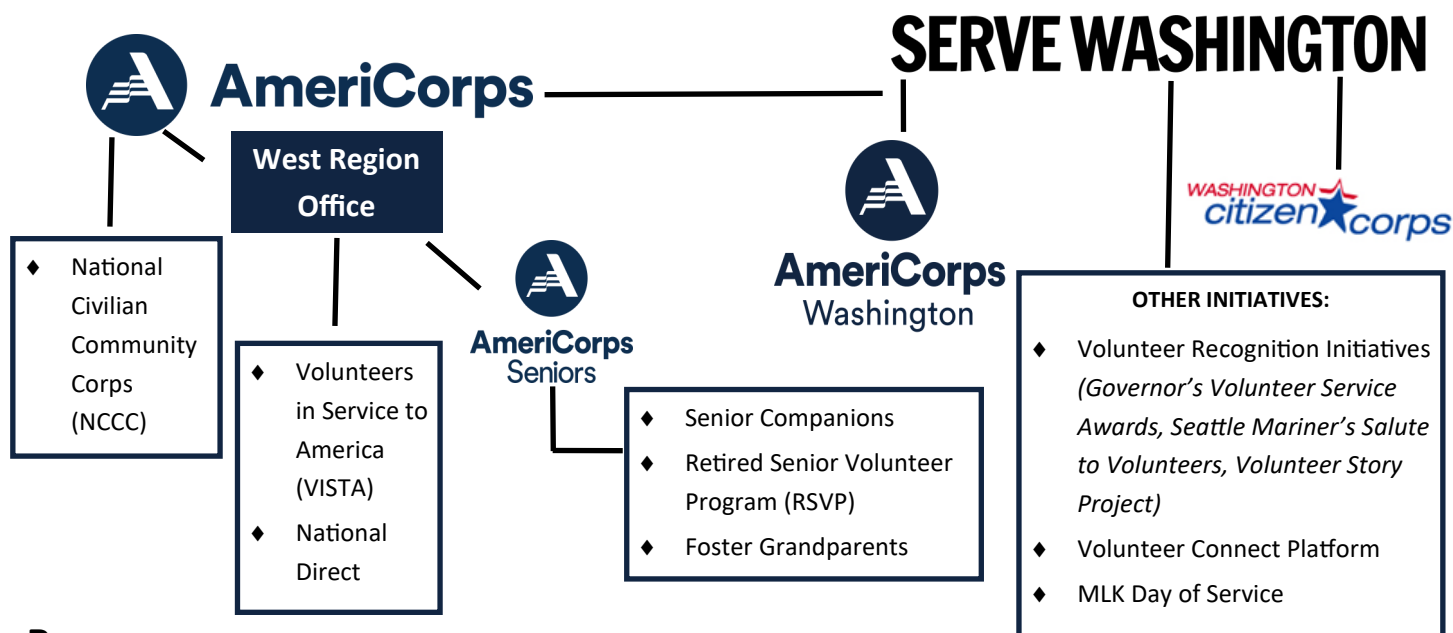


Serve Washington recognizes understanding the various streams of national service can be challenging. This chart will help answer questions to determine if national service may be a fit for your organization.



This chart will help you better understand the National Service Family Tree. Below are the local and regional contacts to help you learn more once you have determined which stream of service is the best fit for you.



Resources

AmeriCorps State

Serve Washington
 Amber Martin-Jahn, Executive Director
 360-902-0669
amber.martin-jahn@ofm.wa.gov

AmeriCorps VISTA or Senior Corps

AmeriCorps West Region Office
 Mary Greusel, Senior Portfolio Manager
 202-815-4256
wa@cns.gov

AmeriCorps National Civilian Community Corps (NCCC)

AmeriCorps NCCC Pacific Region
 Quinn Walker, Community Relations Specialist
 202-528-3553
qwalker@cns.gov

AmeriCorps National Direct (Multi-state)

AmeriCorps West Region Office
 202-815-4256
wa@cncs.gov

About Serve Washington

Serve Washington is proud to serve as the Governor's Commission on Service, one of 52 state service commissions.

Serve Washington advances national service, volunteerism and civic engagement to improve lives; expands opportunity to meet the local critical needs of residents of Washington; and strengthens community capacity while creating healthy and resilient communities.

State service commissions were designed for every state to build the **national service public and private partnership** as a 1:1 match between states and the federal government. The Washington State Service Commission's federal funds are matched with state, private and in-kind sources.

Serve Washington develops a State Service Plan, which serves as a blueprint for maximizing civic engagement, volunteerism and service in the state of Washington to meet unmet needs.

Serve Washington is the convening organization for all streams of national service in Washington.