



# Seattle Foundation: PSGA Funders Forum

*April 26, 2024*



# Vision & Strategic Plan

# Vision + Theory of Change

**Vision:** *We envision a joyful region of shared prosperity, belonging, and justice*

*Harnessing the Power of Us...*

If we build authentic relationships with...

- Grantees
- Fundholders
- Our team + board
- Civic + public partners

And bring them together in...

- Trusted Partnership
- Shared Learning + Discourse

We will be able to...

- Harness collective resources, creativity + expertise
- Inspire civic action + others to join us

In order to...

- Build collective power to create more equitable + just systems <sup>3</sup>

That, in turn will...

*Create a joyful region of shared prosperity, belonging and justice.*

*To affect change...*

*Towards our long-term vision*



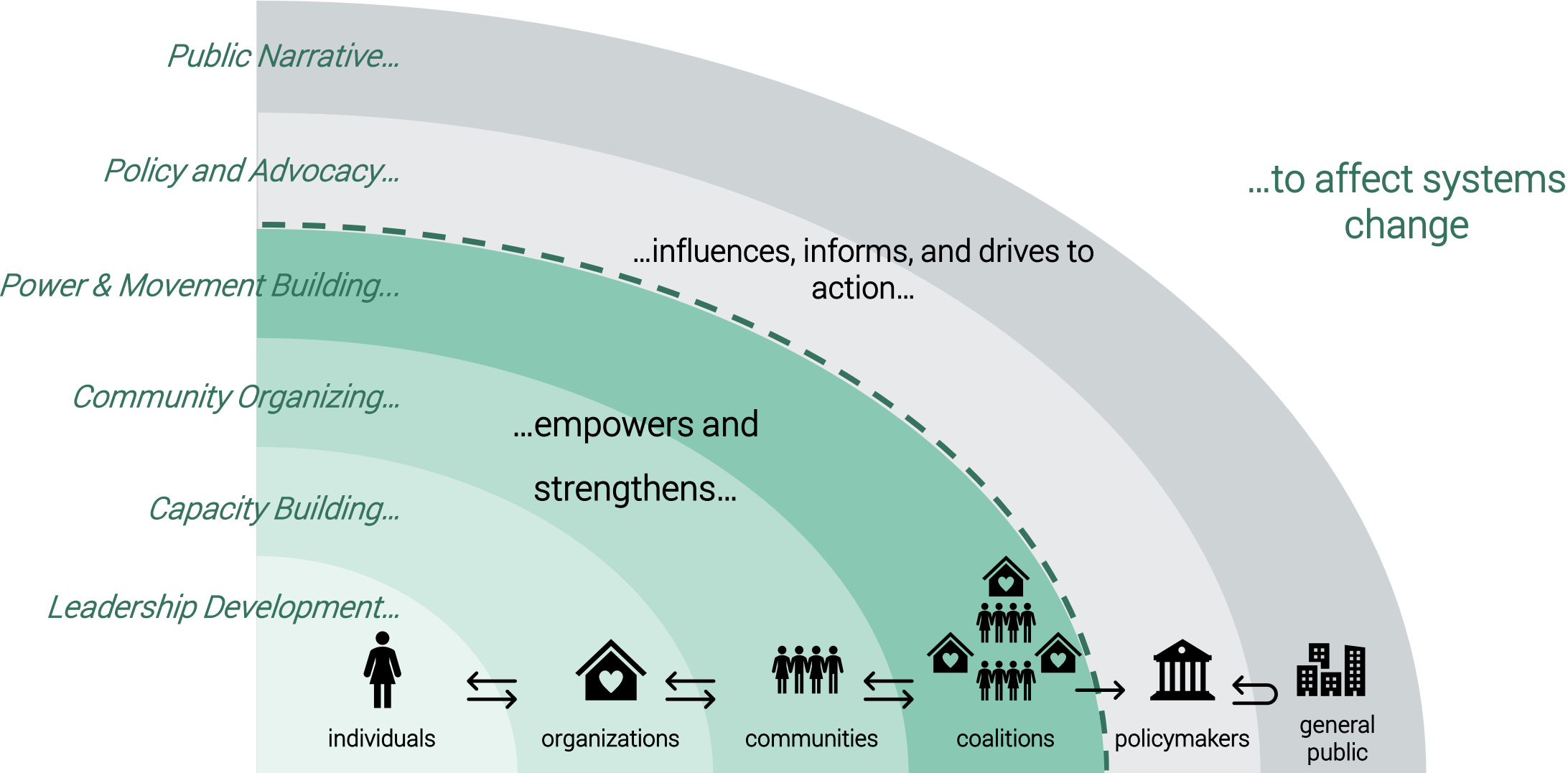
# Core Programs

# The **Blueprint for Impact** charts the path for how SeaFdn can achieve our vision for a future of shared prosperity across a thriving region

<b>Vision</b>	We envision a joyful region of shared prosperity, belonging, and justice...where all individuals and communities have equitable access and outcomes, regardless of race, place, or identity
<b>Current State</b>	While our region has been experiencing unprecedented economic growth, disparities in health, social, and economic outcomes are simultaneously increasing. Inequities disproportionately impact marginalized communities based on group identity and geography, due to systemic barriers
<b>Pillars</b>	To achieve this vision, our region requires sustaining <b>A Just Democracy</b> , an <b>Equitable Economy</b> , and a <b>Resilient Environment</b> enacted by strong communities* that have the access, influence, and voice for self-determination in support of a thriving region

	Universal Outcomes <i>We aim to achieve...</i>	Strategies <i>We will invest in...</i>
<b>A Just Democracy</b>	A Just Democracy ensures individuals and communities are fairly represented and hold political power such that policies and processes center those most impacted by inequities	<div style="border: 2px dashed #A52A2A; padding: 10px;"> <p style="text-align: center;"><b>Systems Change Strategies</b></p> <p>Leadership Development Community Organizing Capacity Building Power &amp; Coalition Building Policy &amp; Advocacy Public Narrative</p> </div> <div style="border: 2px dashed #FF8C00; padding: 10px; margin-top: 10px;"> <ul style="list-style-type: none"> <li>• Civic participation</li> <li>• Voter rights &amp; electoral process</li> <li>• Immigration reform</li> </ul> </div> <div style="border: 2px dashed #9ACD32; padding: 10px; margin-top: 10px;"> <ul style="list-style-type: none"> <li>• Tax policy &amp; reform</li> <li>• Economic mobility</li> <li>• Innovative financing tools</li> </ul> </div> <div style="border: 2px dashed #4682B4; padding: 10px; margin-top: 10px;"> <ul style="list-style-type: none"> <li>• Climate justice</li> <li>• Anti-displacement</li> </ul> </div>
<b>Equitable Economy</b>	An Equitable Economy creates accessible pathways for inclusive growth and fundamental financial security for individuals and communities	
<b>Resilient Environment</b>	A Resilient Environment ensures that individuals and communities thrive in a healthy built and natural environment	

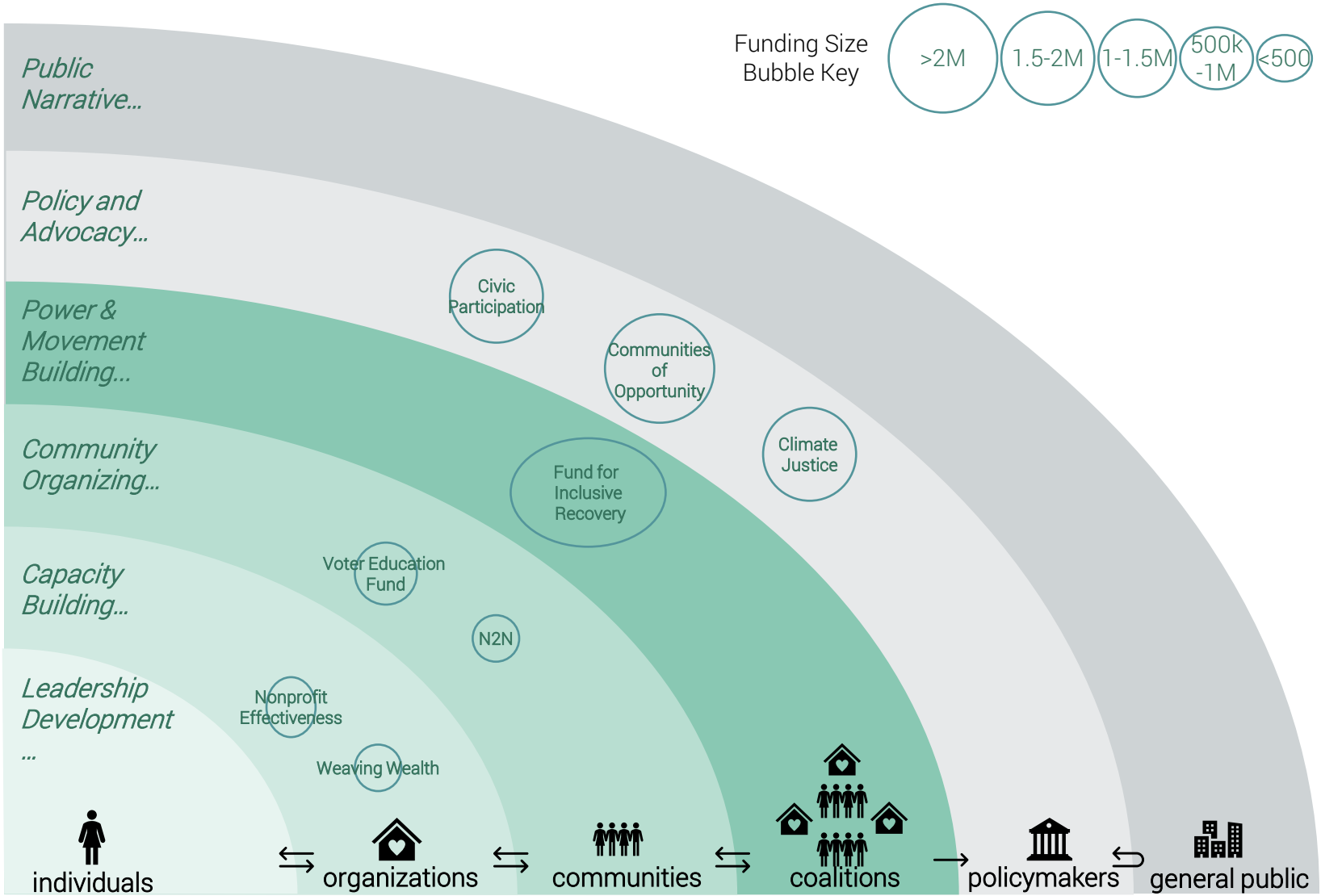
Core Programs invest across the Blueprint's strategies which move the needle on systems change, with a focus on those most impacted



Strategies center the individuals, organizations, communities and coalitions who are most impacted  
 – people of color, low-income, marginalized

# Core Programs target investment in these strategies to advance systems change

Program	Goal
Impact Strategies	<b>Civic Participation:</b> Coalition-building to increase voice, participation, and power
	<b>Climate Justice:</b> Community-driven climate policy change
Communities of Opportunity	Community-driven policy and systems change
Fund for Inclusive Recovery	Drive equitable outcomes and change systems by investing in BIPOC-led organizations
Voter Education Fund	Increase voter participation & civic engagement with historically low-voter turnout communities
Neighbor to Neighbor (N2N)	Grassroots investments in emerging orgs
Nonprofit Effectiveness	Capacity building in the sectors and individual orgs
Weaving Wealth	Indigenous Funding Practice to amplify the work of Native-led organizations and movements locally



Notes: 1. This visual depicts the *primary* cross-cutting strategy that each core program funds, but investments may span cross-cutting strategies; 2. While there intentionally is not a core program that is primarily focused on public narrative, different programs have and do fund public narrative strategies (i.e. Catalyzing Community); 3. Engagement Pipeline, Partnership Mobilization, and Resilience Fund were paused in 2022 to reflect on how best to meet current community need.

# Seattle Foundation's Core Programs Approach: Equitable and Trust-based Grantmaking



Our grantmaking is focused **upstream to address root causes** and to drive **systemic change that advances racial and economic equity**.



We know **long-standing, deep, and trusted relationships in the community** and across sectors are critical in informing our approach and building toward collective action.



We know those most impacted by inequities have firsthand knowledge of community conditions and **their leadership is critical to developing effective policies and community change strategies**. That's why we primarily invest in **BIPOC-led, rooted, and serving organizations**.



# Our Beliefs In Action

Across our set of Core Programs, **examples of what equitable and trust-based grantmaking looks like** for us in practical terms include:

- Representative committees **designing and shaping the development of grant programs**
- **Accessible grant application** processes including optional video submissions, use of site visits, minimizing application questions and requirements
- **Technical assistance** and **capacity building** built into programs
- Community leaders serving as grant reviewers for **funding decisions**
- Honoring community leader expertise and time with **honorariums** for serving on committees
- **Accessible learning and evaluation** processes including self-defined metrics of progress, use of peer learning sessions and focus groups
- **Investing in relationships** by showing up for community events and hosting convenings as desired

Thank you, Questions?